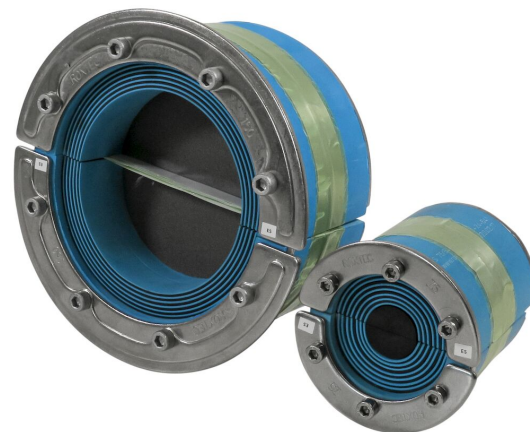




Roxtec RS EMC seal

Penetration seal for EMC, for a single cable or pipe.

The Roxtec RS EMC is a seal for electromagnetic compatibility designed for single cables or pipes in metal sleeves. The entry seal has two halves with removable layers making it adaptable to cables and pipes of different sizes. There is a choice between the ES version for electromagnetic shielding and the PE version that protects against conducted disturbances. The design of the seal makes it easy to install around existing cables or pipes. Roxtec EC (electrical continuity) test sticks are available to help indicate the electrical performance of the transit installation.



- Rodent resistant
- Quick and easy to install

Product characteristics



Fire rated



Watertight



Gas-tight



EMI protection

Structure of installation



Metal

Mounting type



Existing sleeve

Ratings & certificates

Fire

- A-CLASS according to IMO 2010 FTP Code
- E/EI rating according to EN 13501
- F/T rating according to UL 1479
- H-CLASS according to IMO 2010 FTP Code + HC fire load curve
- Jet fire according to ISO 22899-1 and OTI 95634

Tightness

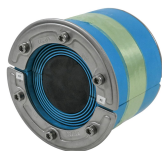
- Gas: 2.67 bar (catastrophic)
- Water: 4 bar (catastrophic)

Supports

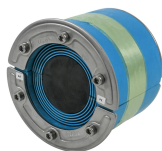
- Electromagnetic shielding
- Potential equalization

Sealing components

Sealing components



RS ES seal



RS PE seal



Lubricant

Accessories



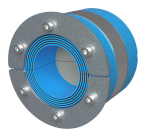
Accessories ES and BG

For detailed information, please visit [roxtec.com](https://www.roxtec.com).

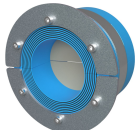


Pre-configured transit kits

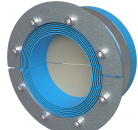
mm/kg



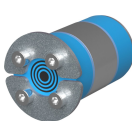
RS 100 ES AISI316 WOC



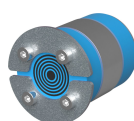
RS 125 ES AISI316 WOC



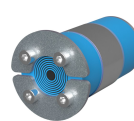
RS 150 ES AISI316 WOC



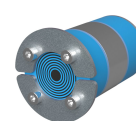
RS 25 ES AISI316



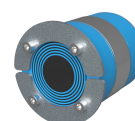
RS 31 ES AISI316



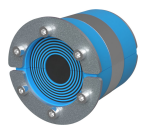
RS 43 ES AISI316



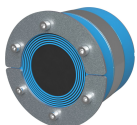
RS 50 ES AISI316



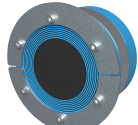
RS 68 ES AISI316



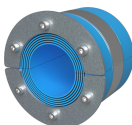
RS 75 ES AISI316



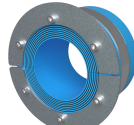
RS 100 ES AISI316



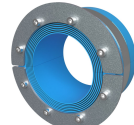
RS 125 ES AISI316



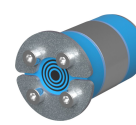
RS 100 PE AISI316 WOC



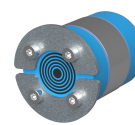
RS 125 PE AISI316 WOC



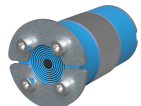
RS 150 PE AISI316 WOC



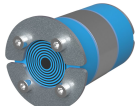
RS 25 PE AISI316



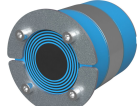
RS 31 PE AISI316



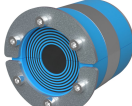
RS 43 PE AISI316



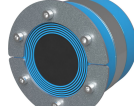
RS 50 PE AISI316



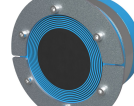
RS 68 PE AISI316



RS 75 PE AISI316



RS 100 PE AISI316



RS 125 PE AISI316

| Product | Configuration | Aperture dimensions Ø | Weight | Art. no |
|-----------------------|-----------------|--------------------------|--------|---------------|
| RS 100 ES AISI316 WOC | 1x (48.0-70.0) | 100 - 102 | 0.8 | ERS0001001121 |
| RS 125 ES AISI316 WOC | 1x (66.0-98.0) | 125 - 127 | 1.2 | ERS0001251121 |
| RS 150 ES AISI316 WOC | 1x (93.0-119.0) | 150 - 152 | 1.6 | ERS0001501121 |
| RS 25 ES AISI316 | 1x (3.6-12.0) | 25 - 26 | 0.04 | ERS0100251121 |
| RS 31 ES AISI316 | 1x (4.0-17.0) | 31 - 32 | 0.11 | ERS0100311121 |
| RS 43 ES AISI316 | 1x (4.0-23.0) | 43 - 45 | 0.24 | ERS0100431121 |
| RS 50 ES AISI316 | 1x (8.0-30.0) | 50 - 52 | 0.32 | ERS0100501121 |
| RS 68 ES AISI316 | 1x (26.0-48.0) | 68 - 70 | 0.5 | ERS0100681121 |
| RS 75 ES AISI316 | 1x (24.0-54.0) | 75 - 77 | 0.6 | ERS0100751121 |
| RS 100 ES AISI316 | 1x (48.0-70.0) | 100 - 102 | 1 | ERS0101001121 |
| RS 125 ES AISI316 | 1x (66.0-98.0) | 125 - 127 | 1.6 | ERS0101251121 |
| RS 100 PE AISI316 WOC | 1x (48.0-70.0) | 100 - 102 | 0.8 | PRS0001001121 |
| RS 125 PE AISI316 WOC | 1x (66.0-98.0) | 125 - 127 | 1.2 | PRS0001251121 |
| RS 150 PE AISI316 WOC | 1x (93.0-119.0) | 150 - 152 | 1.6 | PRS0001501121 |
| RS 25 PE AISI316 | 1x (3.6-12.0) | 25 - 26 | 0.04 | PRS0100251121 |
| RS 31 PE AISI316 | 1x (4.0-17.0) | 31 - 32 | 0.06 | PRS0100311121 |
| RS 43 PE AISI316 | 1x (4.0-23.0) | 43 - 45 | 0.24 | PRS0100431121 |
| RS 50 PE AISI316 | 1x (8.0-30.0) | 50 - 52 | 0.32 | PRS0100501121 |
| RS 68 PE AISI316 | 1x (26.0-48.0) | 68 - 70 | 0.5 | PRS0100681121 |
| RS 75 PE AISI316 | 1x (24.0-54.0) | 75 - 77 | 0.6 | PRS0100751121 |
| RS 100 PE AISI316 | 1x (48.0-70.0) | 100 - 102 | 1 | PRS0101001121 |
| RS 125 PE AISI316 | 1x (66.0-98.0) | 125 - 127 | 1.6 | PRS0101251121 |



The product information provided by Roxtec does not release the purchaser of the Roxtec system, or part thereof, from the obligation to independently determine the suitability of the products for the intended process, installation and/or use.

Roxtec gives no guarantee for the Roxtec system or any part thereof and assumes no liability for any loss or damage whatsoever, whether direct, indirect, consequential, loss of profit or otherwise, occurred or caused by the Roxtec systems or installations containing components not manufactured by an authorized manufacturer and/or occurred or caused by the use of the Roxtec system in a manner or for an application other than for which the Roxtec system was designed or intended.

Roxtec expressly excludes any implied warranties of merchantability and fitness for a particular purpose and all other express or implied representations and warranties provided by statute or common law. User determines suitability of the Roxtec system for intended use and assumes all risk and liability in connection therewith. In no event shall Roxtec be liable for indirect, consequential, punitive, special, exemplary or incidental damages or losses.

The Roxtec products are offered and sold in accordance with the conditions of the Roxtec General Terms of Sales. The latest version of the Roxtec General Terms of Sales can be downloaded from <https://www.roxtec.com/en/about-us/about-roxtec/general-terms-of-sales/>

We reserve the right to make changes to the product and technical information without further notice. Any errors in print or entry are no claims for indemnity. The content of this publication is the property of Roxtec International AB and is protected by copyright.

This document was generated on: 2024-04-07